

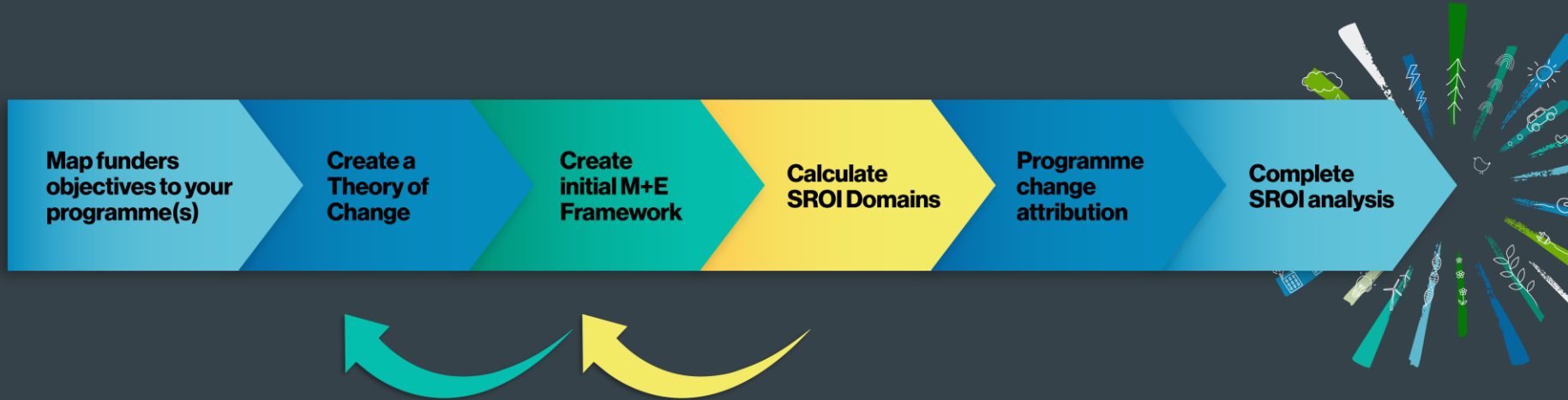


Dollars and sense

MEASURING SOCIAL IMPACT



A+C SOCIAL RETURN ON INVESTMENT ANALYSIS PROCESS



MISSION

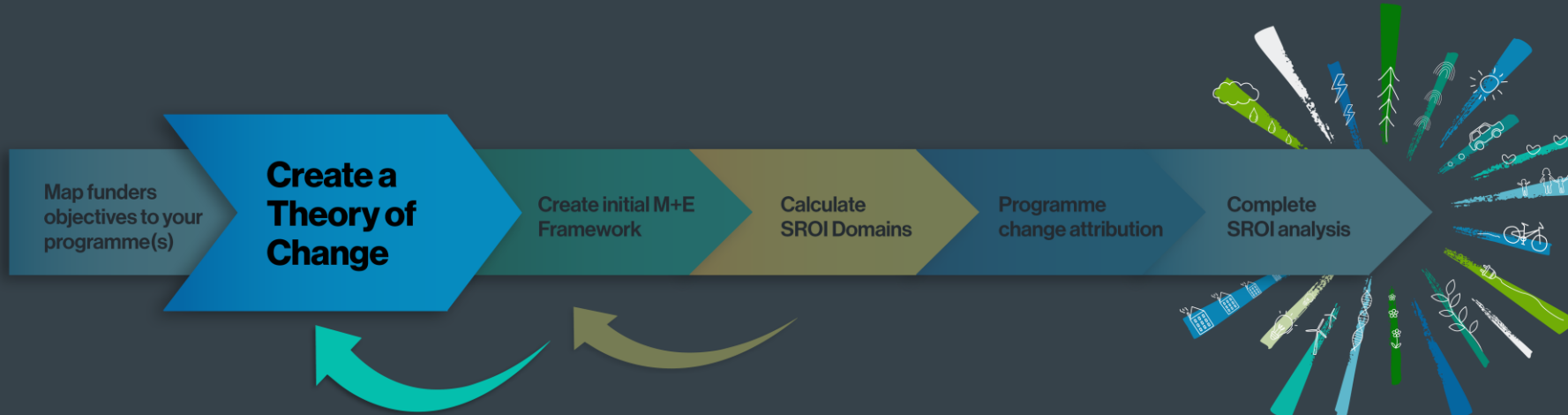
To enhance the quality of housing for vulnerable populations in Erewhon City by improving access to healthy, secure, and affordable homes.



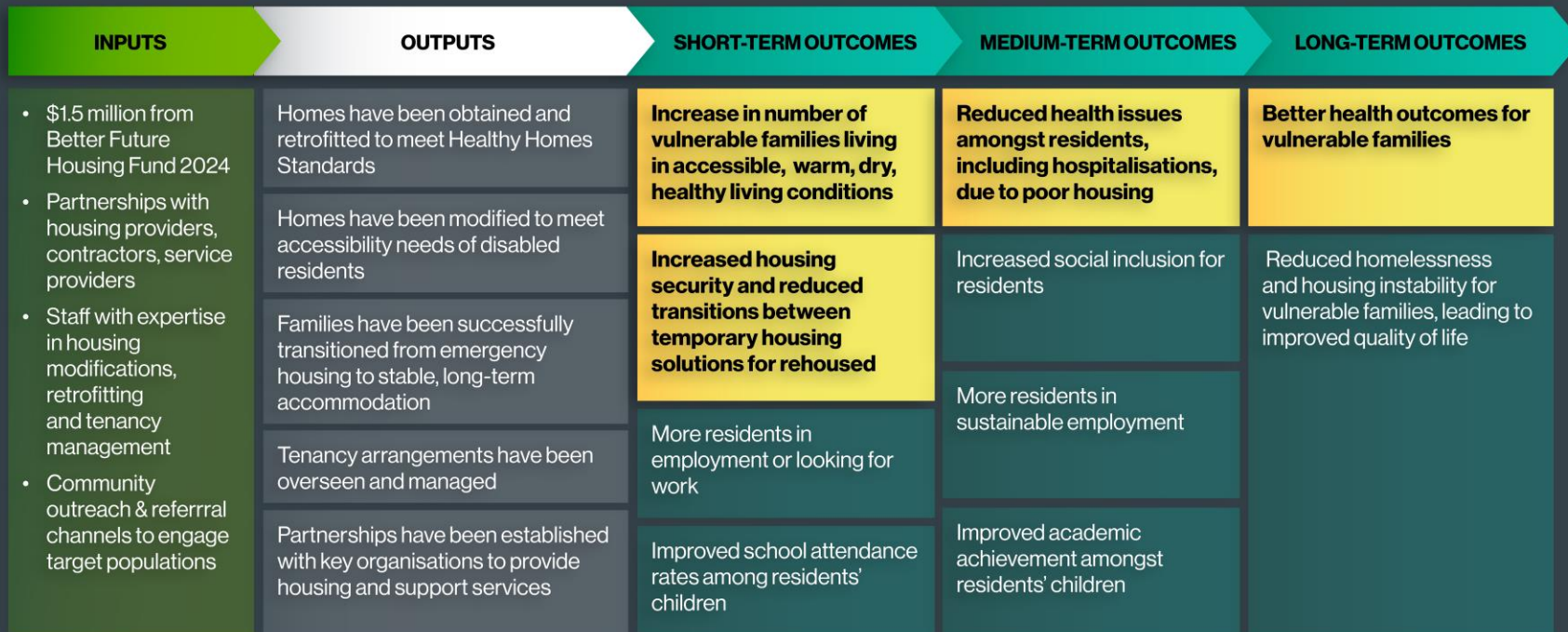
Homestrong focusses on:

- **Healthy Homes Initiative:**
Retrofitting older homes
- **Accessible Homes:**
Modifying homes to make them accessible
- **Safe & Secure Housing:**
Providing long-term tenancies

A+C SOCIAL RETURN ON INVESTMENT ANALYSIS PROCESS



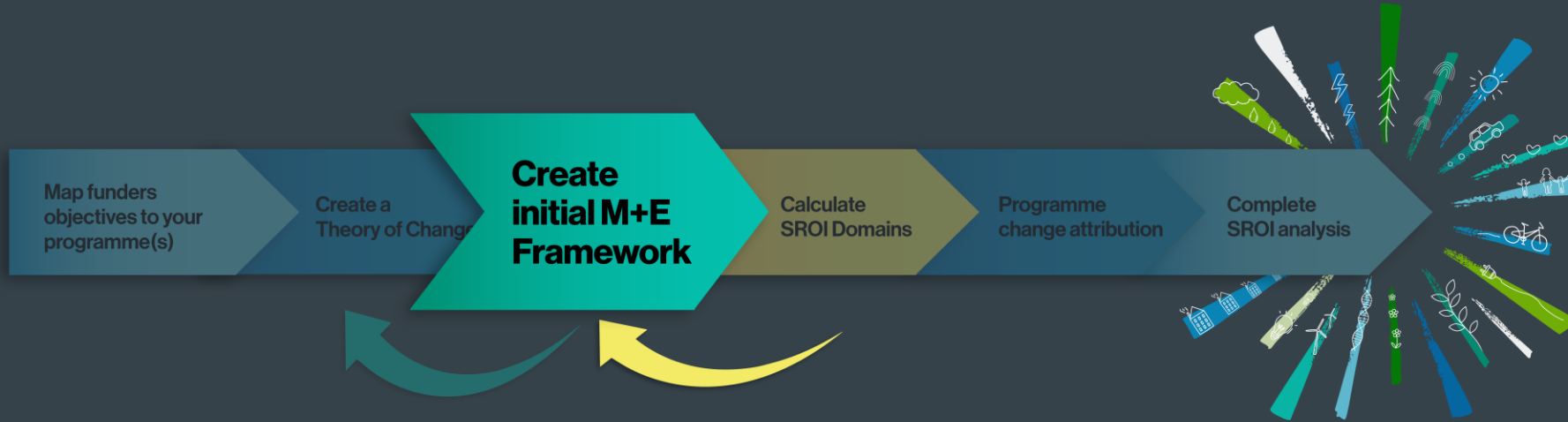
THEORY OF CHANGE



ASSUMPTIONS:

- Adequate level of funding is secured from Better Futures Housing Fund 2024
- Able to source \$ for \$ matched funding at an affordable borrowing rate
- Able to establish good working partnerships with housing providers, contractors, social service providers, iwi providers etc to provide supports that enable families to make the shift from being vulnerable to flourishing
- Homeless families and adults with disabilities are able and willing to engage with additional supports
- Homeless

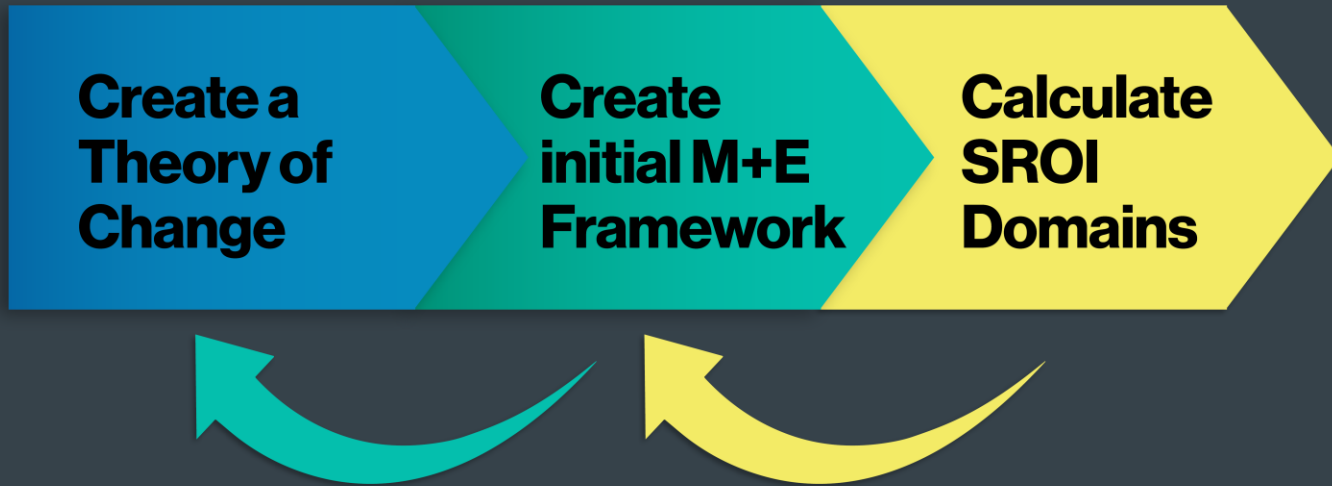
A+C SOCIAL RETURN ON INVESTMENT ANALYSIS PROCESS



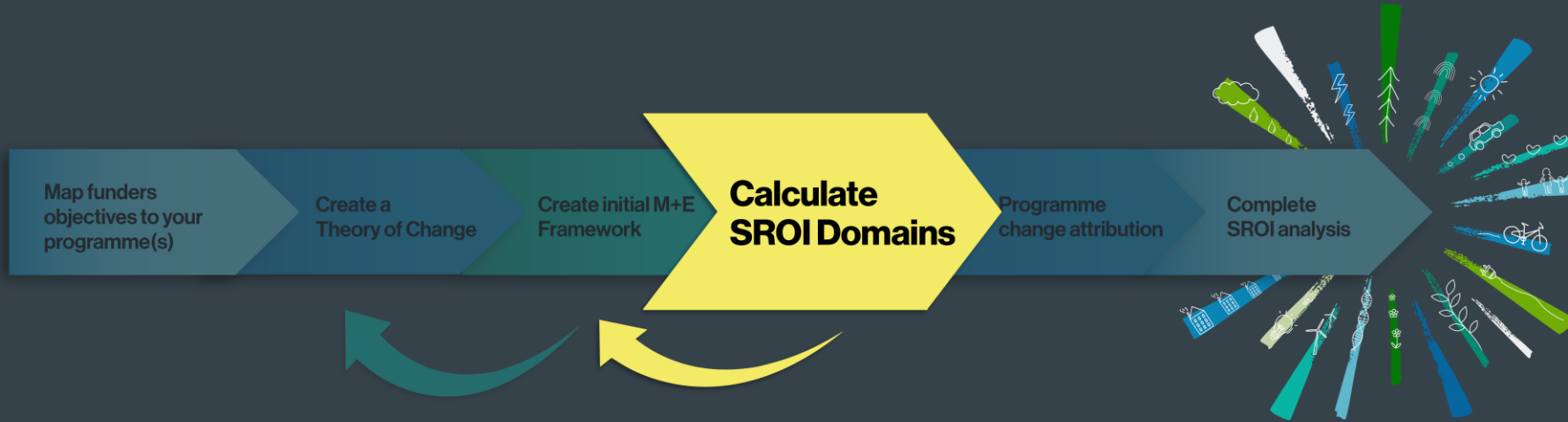
DATA AND QUANTIFICATION RISKS

- **Choosing the Right Metrics**
- **Data Availability and Quality**
- **Quantification Bias**
- **Ethical and data sovereignty.**
- **Over-reliance on Data**
- **Individualistic vs collective**
- **Is qualitative data included**

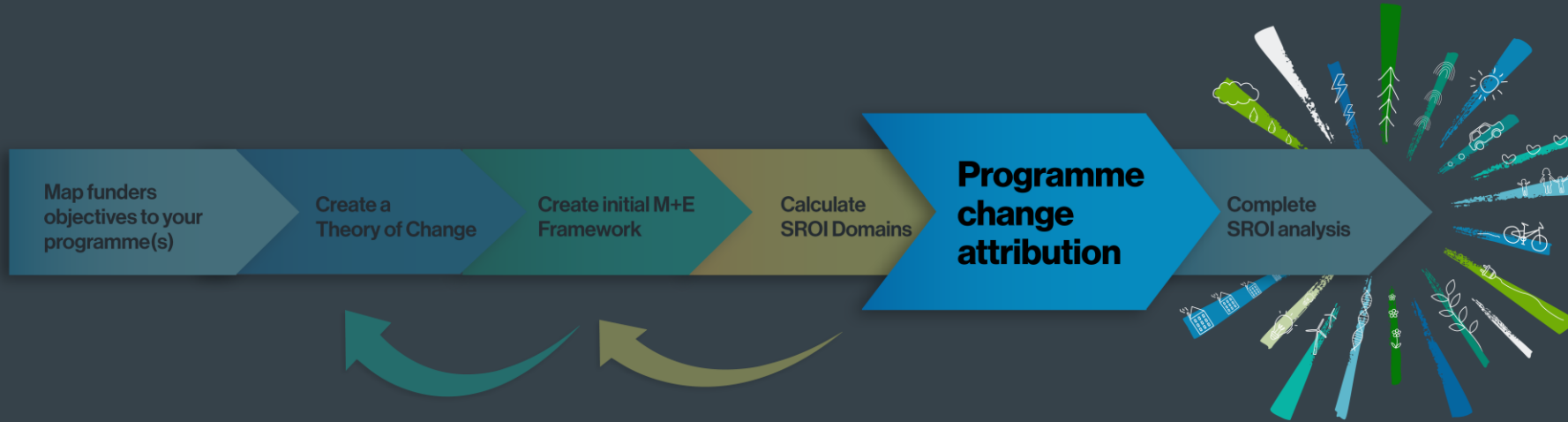
THE THEORY OF CHANGE, M+E FRAMEWORK AND SROI MUST WORK TOGETHER



A+C SOCIAL RETURN ON INVESTMENT ANALYSIS PROCESS



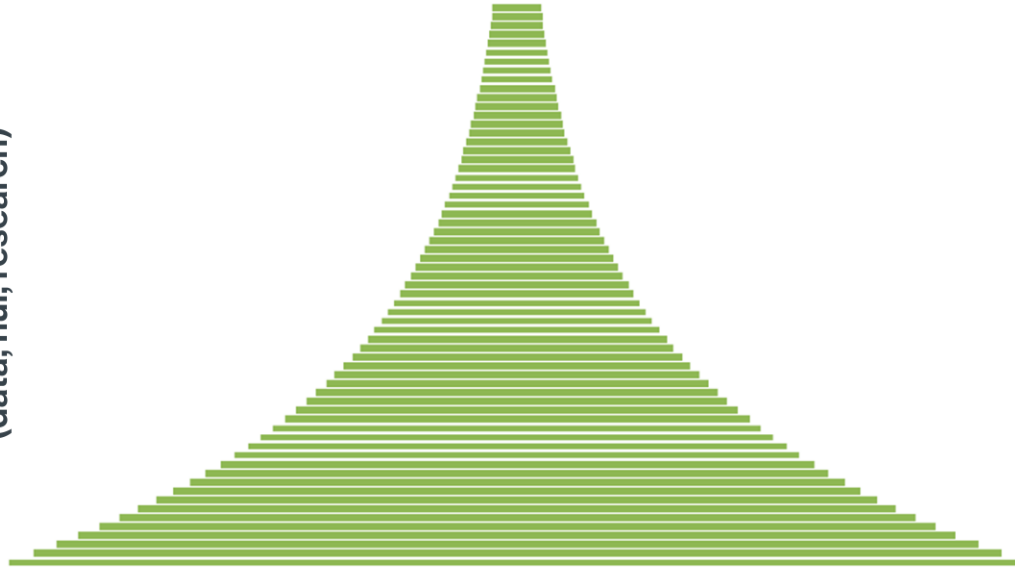
A+C SOCIAL RETURN ON INVESTMENT ANALYSIS PROCESS



The return on investment from more information gathering decreases, but always improves your value estimates

Confidence interval / range of value estimates

Increasing information
(data, hui, research)



Q&A





**GET IN TOUCH IF YOU
HAVE ANY QUESTIONS**

A+C SOCIAL RETURN ON INVESTMENT ANALYSIS PROCESS

